

<b>Classification:</b>	FF	FF	FF	FF-DN	FF-DN
<b>Class:</b>	XI	XI	XI	XIV	XIV
<b>Model:</b>	TEMPEST	TRAFALGAR	TIGER	TRIDENT	TRIAD
<b>Class Commission Date:</b>	2258	2258	2258	2258	2259
<b>Number Proposed:</b>	3	2	2	2	1
<b>Constructed New:</b>	3	2	2	1	1
<b>Rebuilt as this model:</b>				2	
<b>Destroyed:</b>			1		
<b>Scrapped:</b>					
<b>Training:</b>	1				
<b>Converted:</b>	1	2	1	3	1
<b>Decommissioned:</b>	1				
<b>Superstructure:</b>	28	28	32	38	38
<b>Damage Chart:</b>	C	C	C	C	C
<b>Dimensions:</b>					
<b>Length:</b>	310m	310m	310m	310m	310m
<b>Width:</b>	264m	264m	264m	264m	264m
<b>Height:</b>	89m	89m	89m	133m	133m
<b>Displacement:</b>	173230 mt	175105 mt	169880 mt	258880 mt	255130 mt
<b>Cargo Specs</b>					
<b>Total SCU:</b>	366 SCU	337 SCU	304 SCU	337 SCU	365 SCU
<b>Cargo Capacity:</b>	18320 mt	16840 mt	15220 mt	258880 mt	255130 mt
<b>Computer Type:</b>	M-4	M-4	2 X M-4	2 X M-4	2 X M-4
<b>Landing Capacity:</b>	N	N	N	N	N
<b>Cloaking Device:</b>					
<b>Power to Engage:</b>					
<b>Transporters-</b>					
<b>6-person:</b>	8	8	8	8	8
<b>20-person Combat:</b>	8	6	4	4	4
<b>22-person Emergency:</b>	4	4	4	4	4
<b>cargo:</b>	4	4	4	4	4
<b>Laboratories:</b>	6	6	6	6	6
<b>Brigs:</b>	15	15	10	10	10
<b>Replicators:</b>					
<b>Shuttlecraft-</b>					
<b>Light Shuttle:</b>					
<b>Standard Shuttle:</b>	12	12	12	6	6
<b>Heavy Shuttle:</b>					
<b>Cargo Shuttle:</b>					
<b>Medical Shuttle:</b>					
<b>Combat Shuttle:</b>					
<b>Ships Complement:</b>	612	568	518	587	628
<b>Officers:</b>	72	74	74	97	96
<b>Enlisted:</b>	290	294	294	389	382
<b>Troops:</b>	250	200	150	100	150
<b>Passengers:</b>	10	10	10	10	10

<b>ENGINEERING-</b>					
<b>Total Power Available:</b>	32	32	36	50	50
<b>Movement Point Ratio:</b>	3/1	3/1	3/1	5/1	5/1
<b>Warp Engine Type:</b>	FWC-1	FWC-1	FWD-2	FWC-1	FWC-1
<b>Number:</b>	2	2	2	3	3
<b>Power Units:</b>	14	14	16	14	14
<b>Stress Chart:</b>	O/M	O/M	M/G	O/M	O/M
<b>Optimum Speed:</b>	4.55	4.6	3.25	4.55	4.55
<b>Max Safe Cruising:</b>	7.00	7.00	5.00	7.00	7.00
<b>Emergency Speed:</b>	8.42	8.33	6.13	9.39	9.53
<b>Maximum Speed:</b>	9.00	8.91	6.56	10.04	10.19
<b>Impulse Engine Type:</b>	FID-2	FID-2	FID-2	FID-3	FID-3
<b>Power Units:</b>	4	4	4	8	8
<b>WEAPONS/DEFENSE</b>					
<b>Beam Weapon:</b>	FH-3	FH-3	FH-3	FH-3	FH-3
<b>Firing Arcs:</b>	2F,2FP,2FS,	2F,2FP,2FS, 1A,1AP,AS	2F,2FP,2FS, 2A,2AS,2AP	2F,2FP,2FS, 2A,2AP,2AS	2F,2FP,2FS,
<b>Firing Chart:</b>	W	W	W	W	W
<b>Maximum Power:</b>	5	5	5	5	5
<b>Damage Modifiers</b>					
<b>+3</b>	1-10	1-10	1-10	1-10	1-10
<b>+2</b>	11-17	11-17	11-17	11-17	11-17
<b>+1</b>	18-20	18-20	18-20	18-20	18-20
<b>Beam Weapon:</b>					
<b>Firing Arcs:</b>					
<b>Firing Chart:</b>					
<b>Maximum Power:</b>					
<b>Damage Modifiers</b>					
<b>+3</b>					
<b>+2</b>					
<b>+1</b>					
<b>Torpedo Type:</b>	FP-1	FP-1	FP-1	FP-1	FP-1
<b>Firing Arcs:</b>	2f, 2a	2f, 2a	2f, 2a	2f, 2a	2f, 2a
<b>Firing Chart:</b>	L	L	L	L	L
<b>Power To Arm:</b>	1	1	1	1	1
<b>Damage:</b>	10	10	10	10	10
<b>Stock:</b>	200	200	200	200	200
<b>Shields-</b>					
<b>Shield Type:</b>	FSO	FSO	FSO	FSO	FSO
<b>Shield Point Ratio:</b>	1/3	1/3	1/3	1/3	1/3
<b>Maximum Shield:</b>	16	16	16	16	16
<b>Combat Efficiency</b>	59.5	79.3	109.2	103.6	62.3
<b>D-</b>	113.5	113.5	125.3	118.8	118.8
<b>WDF-</b>	52.4	69.8	87.2	87.2	52.4
The Chandley Class Design, History, Names & Registries © FASA					
Star Trek is © Paramount Pictures					
FFT-X FASA Stats by Steve Bacon					
v1.0					

Ships of the FFT-X Program						
Name	Registry	Commission	Fate			
USS Tempest	NX-2291	2258	DC 2272	Starfleet Museum		DC - Decommissioned
USS Typhoon	NX-2292	2259	R 2271	Chandley Mk1		R - Refitted
USS Trafalgar	NX-2293	2258	R 2272	Chandley Mk1		D - Destroyed
USS Tally Ho	NX-2294	2259	R 2272	Chandley Mk1		T - Training Ship
USS Tiger	NX-2295	2258	D 2262			
USS Talon	NX-2296	2259	R 2263	Trident	R 2280	Trident II
USS Trident	NX-2297	2258			R 2280	Trident II
USS Triad	NX-2298	2260	R 2265	Trident	R 2280	Trident II
USS Tornado	NX-2299	2264	T 2270			

Ships of the Trident subclass were reclassified as NCC in 2266, other ships retained their NX designation until retirement or refit to Chandley Class standards

#### Genesis of the Chandley Class - The FFT-X programme

After the conclusion of the Four Years War, Star Fleet Command initiated the Strategic Forces Survey to evaluate every major operation of the war, from its conception to its final outcome. All aspects of these operations, starting with the initial planning stages, to the deployment of forces, their use during the operation, and the after-action requirements of those forces, were evaluated. The results of this survey have directly influenced plans made by Star Fleet Command ever since.

One of the weaknesses identified by the survey was that Star Fleet needed combat vessels carrying boarding parties or prize crews so that it could follow up a successful campaign with rapid and decisive blows against a retreating or routed enemy. Star Fleet warships did not carry marine assault teams, and, therefore, they were unable to board and capture enemy vessels or outposts. In many operations, Star Fleet vessels were held back so that their combined boarding groups could take control of disabled enemy vessels or outposts; this caused lengthy delays in follow-up operations and allowed the enemy to recover. To take enemy outposts, assault ships were called in, frequently a poor choice because they were slow, vulnerable, and usually carried too many troops for small operations. To solve this problem, Star Fleet began developing the frigate class of ships to carry marines trained to board hostile vessels and complexes.

The story of the Chandley Class actually predates the commissioning of the USS Chandley (NCC 2301) by some eleven years. In 2258, in direct response to the Strategic Forces Survey, Chandley Works proposed the 'Fleet Frigate - Troop' (FFT). The design was a radical move away from the compact Frigates of the Loknar Class, and was more closely related to the Heavy Frigates of the Surya and Coventry Classes.

The Sketch Design proposed to Star Fleet Command featured the new phaser and photon torpedo weapons, coupled to the FWC-1 warp drive and FSO shields. Elements within Starfleet Command were sceptical that the design could combine both the combat mission of a Frigate and the required troop carrying mission, however the design was supported by the Commandant of the Star Fleet Marines and the influence he bought to bear was considerable, and resulted in an experimental program being written around the design. Such was the uncertainty about the final design was that ships were considered reanging between classes XI and XIV.

The experimental program was dubbed FFT-X (Fleet Frigate - Troop Experimental), and as a result it was decided that all the ships would be given names beginning with 'T'. As an experimental program, the plan was to evaluate a number of ships of similar basic design, but that each stressed different possible permutations of the Frigate design, one would maximise troops (Tempest), another would maximise speed (Trident), a third would maximise firepower (Tiger) and the fourth would be a compromise solution (Trafalgar). The plan was to order eight ships in total, although initially it was felt that the mix would favour the Tiger class, as that was seen to be the best solution by Military Operations Command.

The Starfleet Corps of Engineers, and the designers at Chandley Works, felt that the balance of the Tiger class was problematic, the increase in firepower was bought at the expense of speed and troop capacity, they argued that the design's slow speed would be a major liability, tragically they were later proved correct. As such they argued for just two of each design to be built.

#### The FFT-X ships are ordered

Eight ships were ordered in 2258, consisting of two each of four slightly different variations on the basic design theme. The baseline design supported by the Star Fleet Marines was ordered as the Tempest sub class, the ship was viewed as the optimal mix between combat and troop carrying capability, in that it could carry 250 troops, and was still more combat efficient and as fast as a Loknar Class Frigate.

The second version was named the Trafalgar sub class, this version was the version originally designed by Chandley Works, compared to the Tempest sub class, it sacrificed billets for 50 marines, along with two combat transporters in order to allow the fitment of three aft firing phasers in single mounts. The designers favoured this option to maximise combat persistence, given the finite number of photon torpedo warheads that a ship could carry.

The third version was intended to mount a far heavier armanent, reflect the more traditional Frigate role; this sub class, named Tiger mounted the lighter and more powerful FWD-2 warp drive system. This version of the design was supported by Military Operations Command for use as a Picket Ship in border areas. The intention was to have a ship that could carry a force of Marines, yet still have one on one superiority over any ship it encountered. The price paid for this greater weapon load and power was two fold, the marine contingent was cut back to 150, as a result of the need to install the three twin mount rear firing phasers, and also as a result of the need to incorporate a second M-4 computer in the design to provide fire control. The most significant impact was on speed though, maximum speed fell to warp 6.56 compared to warp 9 in the Tempest (or 8.91 in the Trafalgar). In lightspeed terms the ship could achieve only 38% of the speed that the Tempest could (282.14c compared to 730.14c).

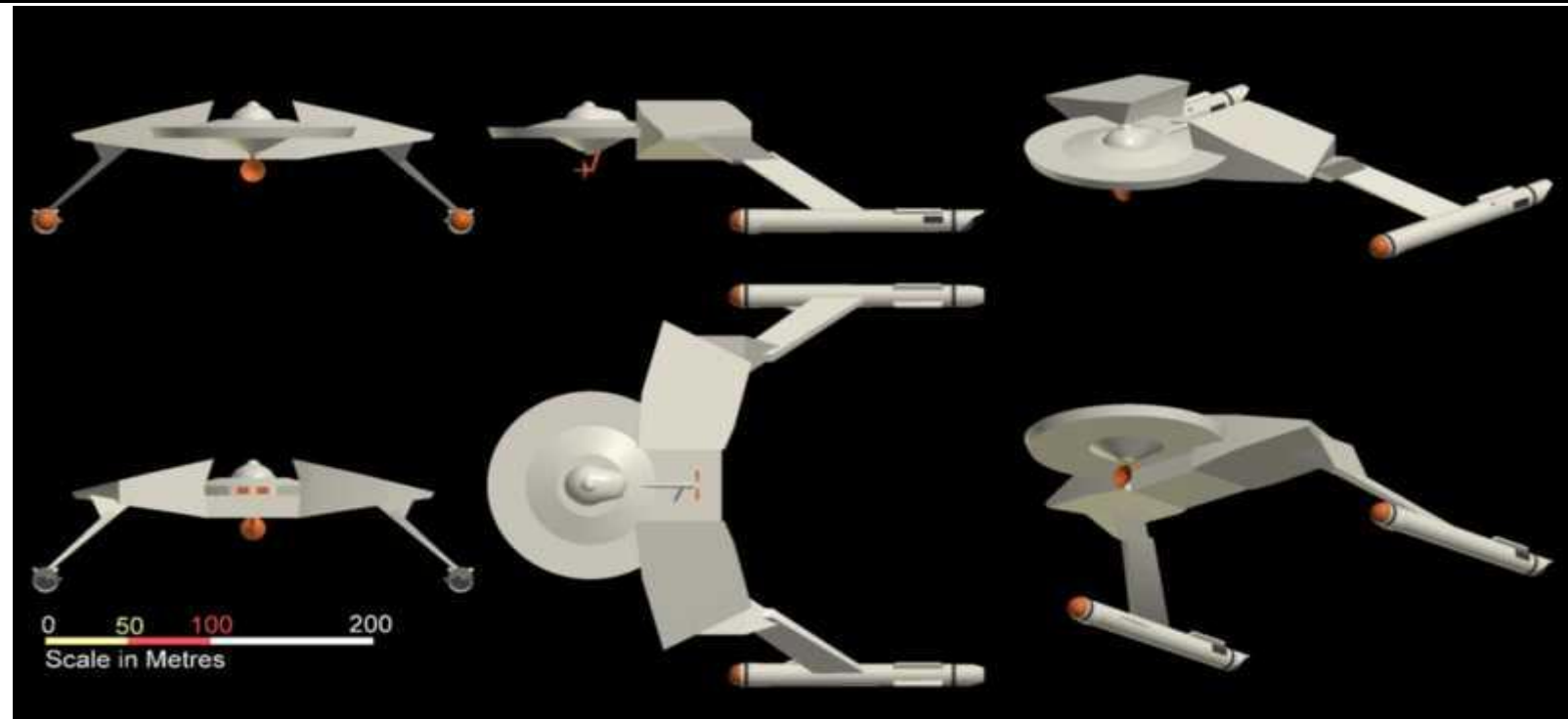
The Star Fleet Corps of Engineers, having recognised the likely shortcomings of the Tiger sub class, proposed the fourth variation, Trident. Trident reverted to the FWC-1 warp drive, but added a third nacelle to the design. The third nacelle reduced range by 50%, making the design unsuitable for use on patrol duties, but increased maximum speed to warp 10.04, (1012.8c) making the ship one of the fastest in known space. The twin M-4 installation of the Tiger was retained, as was the enhanced weapons fit. The net result of this, coupled with the power conduits for the third engine, was to further reduce the number of marines carried to just 100, and cut the number of shuttles carried in half to just six.

The second ship of the Trident sub class, USS Triad was experimentally modified, at the request of the Starfleet Marines, while under construction to carry the weapons fit of the Tempest sub class. This modification was made to increase the number of marines that could be carried up to 150, this also had the side effect of a marginal speed increase. However, it was felt that the ship that resulted offered only speed as an improvement on the basic Tempest design, and as such the USS Triad was modified to the standard Trident design in 2265.

#### The first FFT-X ships commission

The first four ships commissioned in late 2258, a superb achievement seeing as they had been ordered only 10 months previously. This was made possible by the reuse of primary hulls originally intended for Ptolemy class ships. This four consisted of one ship of each of the four sub classes.

All four ships were allocated to the Klingon Frontier in order to gain experience of the concept in action in an area that was still hostile. Initially the ships saw little serious action as the Klingons were still licking their wounds. The larger troop capacity of the Tempest sub class had proved to be valuable on a number of occasions when boarding and inspecting Orion cargo ships travelling in groups, but Military Operations Command felt that the greater firepower of the Tiger sub class was still the preferred solution.



Tempest, Trafalgar and Tiger sub classes

#### The FFT-X Ships in service

In early 2260 the utility of the Trident design was proven, the USS Trident answered a distress signal from the newly refitted Larson Class Destroyer, USS Justinian (NCC 4362). The Justinian had experienced a complete failure of its power systems, and was in a decaying orbit, The Trident, responding to the signal managed to maintain speeds in excess of warp 10 for two hours and reached the crippled Larson class ship in time to save it from burning up in the atmosphere. Damage to the Trident was remarkably minor, any other class of ship in the fleet would have been severely damaged by travel at such a speed for a prolonged period.

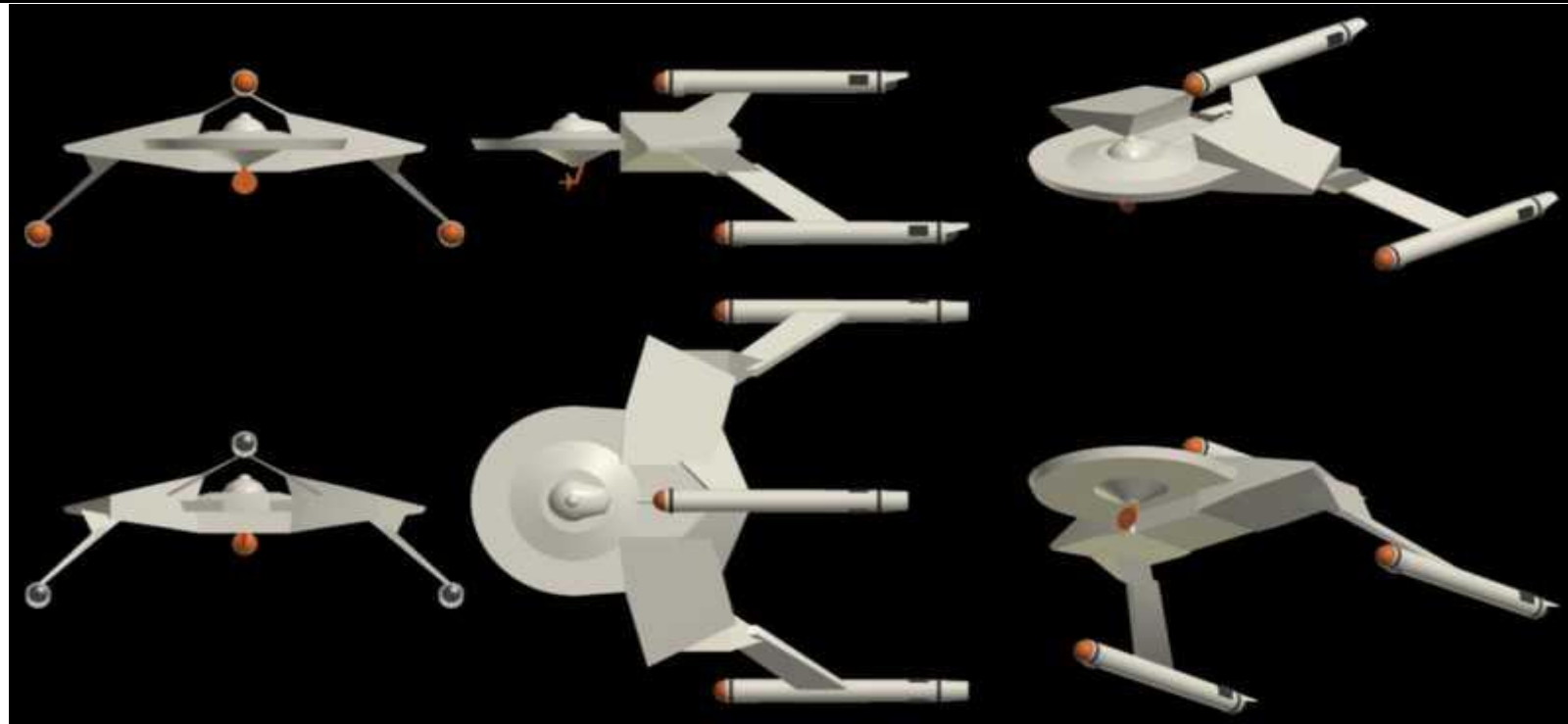
2262 saw the worst fears of many confirmed, the USS Tiger was on solo patrol when she was ambushed by 6 D-10 Cruisers. Normally the best course of action in such an ambush would be to flee as the odds against surviving such an engagement would be slim in the extreme. The Tiger attempted to flee the combat, but the superior speed of the Klingon vessels meant that the Tiger was outclassed. Forced to fight, Tiger fought valiantly, despatching two of the Cruisers before she succumbed. When a relief force, led by the USS Triad, reached the scene no survivors were found from the over 500 souls aboard the ship. The responsible ships were disclaimed as renegades by the Klingon Empire, but most in Star Fleet doubted this, and tensions on the Frontier rose accordingly.

In 2263, The USS Tempest fell into a similar ambush, this time against four D-10s (the four which survived the attack on Tiger) and a pair of D-7s. This time Tempest made use of her superior speed to evade combat, and made use of the rear torpedos to harass the enemy while they pursued her, these torpedoes destroyed one of the D-7s and crippled a D-10. The Tempest's commander then lured the Klingons straight into a Federation trap, knowing that Klingons would not give up a chase he lured them straight into the arms of a battle groups of perimeter action ships and Loknar Class frigates. All four remaining Klingon ships were destroyed, for the loss of no Federation vessels. The Tempest then returned to the crippled D-10 and used her marine force to board her, they found the crew consisted of a mixture of Klingons and Orions, the ships were indeed renegades. This discovery led to a temporary

The success of the Tempest led to the ordering of a third vessel of the sub class (USS Tornado) to replace the lost Tiger. The failure of the Tiger, also led to the refitting of the Talon to Trident specification in 2263. Since that time no ship of the Chandley family has been powered by an engine other than the FWC-1. The failure of the Tiger sub class meant that the competition was down to a three horse race between the Tempest, Trafalgar and Trident designs. The Triad variation already been eliminated, as it offered too small an improvement in combat efficiency over the Tempest design, and the ship was refitted to Trident configuration in 2265.

#### Choosing the winner

The performance of the remaining designs was assessed in 2265. It was felt that although the additional firepower provided by the Trafalgar and Trident subclasses was welcome (and the speed of the Trident), the price paid in Marine complement was a problem, and that the twin computer arrangement was a potential weak point in the design, as a result it was decided to use the Tempest design as a basis for a production class



Trident Sub class

#### Finalising the Chandley Design

The design created in 2266, was known as Chandley 2265, and featured the engines and computers of the Tempest coupled to the new FP-6 torpedo and FH-9 phasers, however the decision was made, given the progress in linear warp drives to delay production pending the introduction of new technologies.

The Chandley 2266 design added the FIF-2 impulse drive to the notional design, and the next version Chandley 2267 adopted the experimental M-5 computer. The Chandley 2268 design changed the phasers to the FH-11 phasers. The USS Chandley, NCC 2301, was laid down in 2268 and was intended to be fitted with the M-5 as per the 2268 design, the failure of that computer meant that the construction had to be delayed while an alternative was sought. The alternative adopted was the M-6 in 2269, in the final version of the Mk-1 design, which was codenamed Chandley 2269.

In 2269, the USS Chandley, the first production ship of this prestigious line of vessels, was commissioned. The Chandley not only met the requirements of being a deep-space fighting vessel but also could beam its 250 marines in less than four minutes. With this vessel, Star Fleet had the ability to follow up combat more efficiently. The large, wing-like assembly houses the company of marines, their equipment, training areas, shuttlebay, and the combat transporters needed. The marines are billeted by platoons, with each platoon having its own spacious training, mess, dormitory, and recreation areas. The training areas, located in the central core of the wing structures, are made up of modules that may be positioned to resemble the interior of enemy ships and installations, allowing assault teams to familiarize themselves with their intended operation area; this training technique is largely responsible for the high success rate in boarding actions. The training areas are also used for physical training and firing ranges. Each platoon has a recreation area containing a swimming pool, gymnasium, gravball chamber, and complete health facilities; these facilities are largely responsible for the notable successes enjoyed by marine sports teams.

#### Fate of the FFT-X ships

The entry of the definitive Chandley class into service meant that the days of the Tempest and Trafalgar subclasses were numbered. Tempest was decommissioned in 2272 and put on display in the Starfleet museum; Typhoon, Trafalgar and Tally Ho were refitted to Chandley Mk1 configuration; Tornado became the Marines training ship in 2270 in support of the Chandley class deployment. The three ships of the Trident subclass remained in service unchanged until 2280, when they were taken in hand for a major refit to become the Trident II class.

On reflection the importance of the FFT-X ships in the evolution of the modern Star Fleet Frigate in general, and the Chandley class in particular cannot be overstated. These nine ships were instrumental in refining the concept and defining the requirements for all troop carrying frigates.