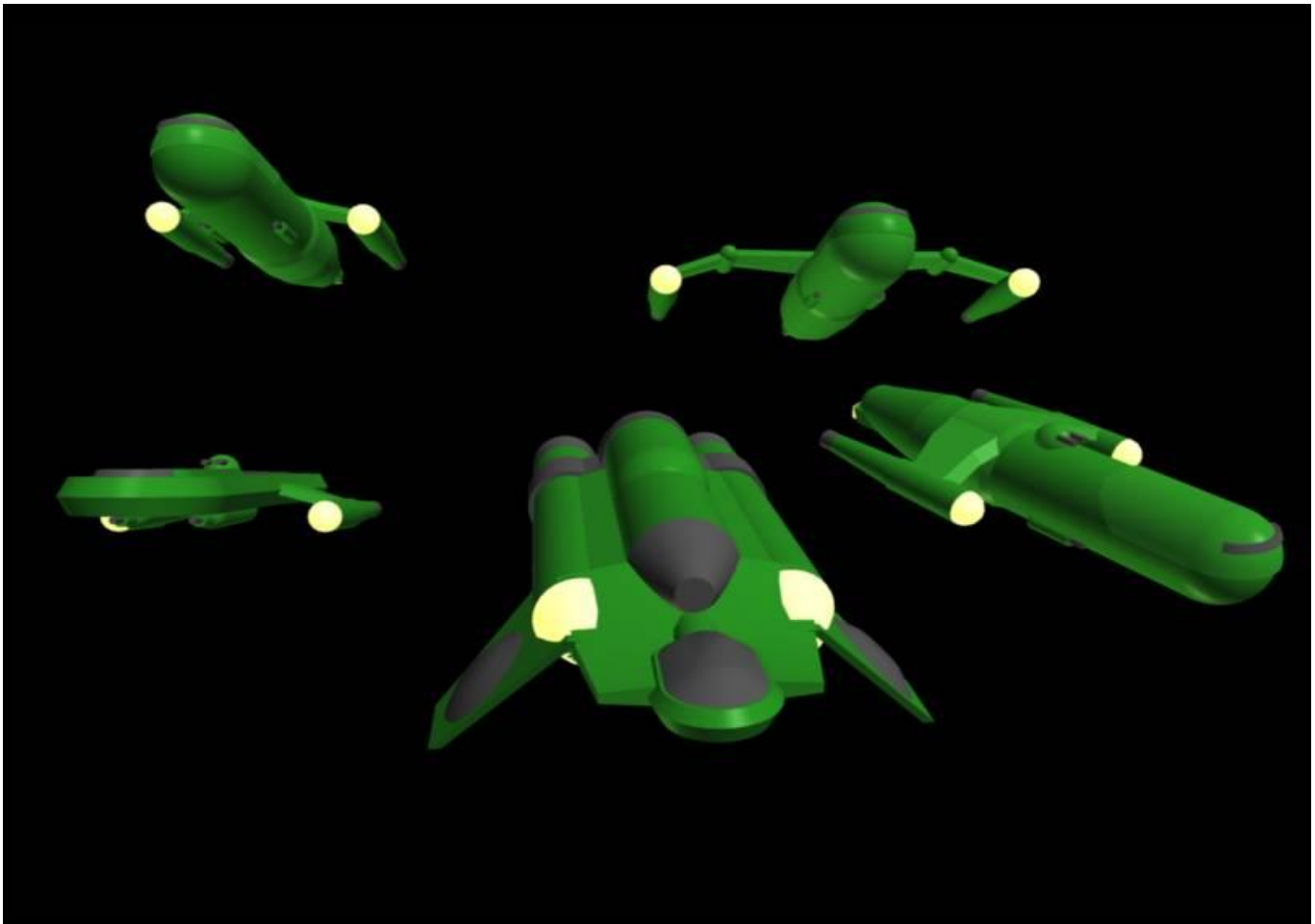


2130-2230 Starship Construction Charts FASA Star Trek Starship Tactical Combat Simulator



Compiled By: Steve Bacon

Original Layout Design By: Bryan Jecko

Thanks to the following for their assistance: Lee Wood, Brian Stainsby, Steve Pugh, Terry Shannon, George Recker Jr.

Version 0.93
03.09.04

STARSHIP WEIGHT TABLE		
	Minimum	Maximum
Ship Class	Weight	Weight
I	1,000	5,000
II	5,000	15,000
III	15,000	25,000
IV	25,000	40,000
V	40,000	60,000
VI	60,000	80,000
VII	80,000	100,000
VIII	100,000	120,000
IX	120,000	140,000
X	140,000	160,000
XI	160,000	180,000
XII	180,000	210,000
XIII	210,000	240,000
XIV	240,000	300,000
XV	300,000	350,000
XVI	350,000	400,000
XVII	400,000	450,000
XVIII	450,000	500,000
XIX	500,000	600,000
XX	600,000	700,000

Computer Control Types

Computer Control Type	System Mass (mt)	Appropriate Ship Classes	SS Requirement	Maximum WDF Allowed	Availability	Date Entered Service	Cost
R1L	500	1-9	1	4		2130	
R2L	1000	5-12	2	7		2144	
R2L-1	1200	6-13	2.2	9		2158	
R3L	2000	8-16	3	10		2148	
R4L	4000	13-20	4	13		2155	
R5L	8000	14-20	5	16		2156	

WARP ENGINE TYPES

SINGLE ENGINE USE

Warp Engine Type	Mass (MT)	Power Units Available	Computer Control Required	Stress Column (Eng/SS)	Superstructure	Availabilty	Cost	Year
RFTL-1	25,000	6	R1L		3			2130
RFTL-2	20,000	6	R1L		2.5			2140
RFTL-3	4,000	5	R1L		0.5			2135
RFTL-4	40,000	9	R1L		3			2144
RFTL-5	18,000	6	R1L		2			2150
RFTL-5B	18,000	6	R2L		2			2158
RFTL-6	37,500	12	R2L		3			2155
RFTL-7	3,250	6	R1L		0.5			2156
RFTL-8	60,000	15	R3L		4			2158
RFTL-8B	120,000	10	R1L		2			2156
RFTL-9	50,000	14	R3L		3.5			2160

WARP ENGINE TYPES

DUAL ENGINE USE

Warp Engine Type	Mass (MT)	Power Units Available	Computer Control Required	Stress Column (Eng/SS)	Superstructure	Availabilty	Cost	Year
RFTL-1	50000	6	R1L		6			2130
RFTL-2	40000	6	R2L		5			2140
RFTL-3	8000	5	R1L		1			2135
RFTL-4	80000	9	R2L		6			2144
RFTL-5	36000	6	R2L		4			2150
RFTL-5B	36000	6	R2L-1		4			2158
RFTL-6	75000	12	R3L		6			2155
RFTL-7	6500	6	R1L		1			2156
RFTL-8	120,000	15	R4L		8			2158
RFTL-8B	240,000	10	R4L		4			2156
RFTL-9	100,000	14	R4L		7			2160

WARP ENGINE TYPES

TRI ENGINE USE

Warp Engine Type	Mass (MT)	Power Units Available	Computer Control Required	Stress Column (Eng/SS)	Superstructure	Availabilty	Cost	Year
RFTL-8B	360,000	10	R5L		6			2156

MOVEMENT POINT RATIO TABLE

SINGLE WARP DRIVES

Movement Point Ratios

Ship Class	1/1		2/1		3/1		4/1		5/1		6/1		7/1		8/1	
I	RFTL-3 7.5 2/3	RFTL-7 9 2.5/3.5	RFTL-3 4 2/3	RFTL-7 4.5 2.5/3.5	RFTL-3 2.5 2/3	RFTL-7 3 2.5/3.5										
II	RFTL-3 7.5 2/3	RFTL-7 9 2.5/3.5	RFTL-3 4 2/3	RFTL-7 4.5 2.5/3.5	RFTL-3 2.5 2/3	RFTL-7 3 2.5/3.5										
III			RFTL-2 4.5 2/3	RFTL-5A 4.5 2.5/3.5	RFTL-2 3 2/3	RFTL-7 3 2.5/3.5	RFTL-2 2.5 2/3	RFTL-7 2.5 2.5/3.5								
IV	RFTL-5B 9 3/4		RFTL-1 4.5 2/3	RFTL-5A 4.5 2.5/3.5	RFTL-1 3 2/3	RFTL-2 3 2/3	RFTL-7 2.5 2/3	RFTL-1 3 2/3								
			RFTL-5B 4.5 2.5/3.5		RFTL-5A 3 2.5/3.5		RFTL-2 2.5 2/3									
V	RFTL-6 17.5 3/4		RFTL-5B 4.5 2.5/3.5		RFTL-1 3 2/3	RFTL-4 4.5 2.5/3.5	RFTL-1 3 2/3	RFTL-2 2.5 2/3	RFTL-2 2 2/3							
					RFTL-5A 3 2.5/3.5	RFTL-5B 3 2.5/3.5	RFTL-4 3.5 2.5/3.5	RFTL-5A 3 2.5/3.5								
VI			RFTL-6 9 3/4		RFTL-4 4.5 2.5/3.5	RFTL-5B 3 2.5/3.5	RFTL-1 3 1.5/2.5	RFTL-4 3.5 2.5/3.5	RFTL-1 2 1.5/2.5	RFTL-4 3.0 2/3	RFTL-8A 4 3/4					
					RFTL-9 7 3/4		RFTL-5A 3 2.5/3.5	RFTL-9 5 3/4	RFTL-5A 2 2.5/3.5	RFTL-8A 4.5 3/4						
VII			RFTL-6 9 2.5/3.5		RFTL-6 4.5 2.5/3.5		RFTL-4 3.5 2.5/3.5	RFTL-5B 3 2.5/3.5	RFTL-4 3.0 2/3	RFTL-9 4 2.5/3.5	RFTL-8A 4 2.5/3.5					
							RFTL-9 5 2.5/3.5									
VIII					RFTL-6 4.5 2/3				RFTL-4 3.0 2/3	RFTL-9 4 2.5/3.5	RFTL-8A 4 2.5/3.5	RFTL-9 3.5 2.5/3.5				
IX									RFTL-8B 3 3/4		RFTL-8A 4 2.5/3.5	RFTL-8B 2.5 3/4	RFTL-8A 3.5 2.5/3.5			
X											RFTL-8B 2.5 2.5/3.5	RFTL-8A 3.5 2/3	RFTL-8B 2.5 2.5/3.5			
XI												RFTL-8B 2.5 2/3				
XII																
XIII																
XIV																
XV																
XVI																
XVII																
XVIII																

MOVEMENT POINT RATIO TABLE

DUAL WARP DRIVES

Movement Point Ratios

Ship Class	2/1	3/1	4/1	5/1	6/1	7/1	8/1	9/1	
I									
II	RFTL-3 7.5 2.5/3.5	RFTL-7 9 3/4	RFTL-3 5.0 2.5/3.5	RFTL-3 5.0 2.5/3.5					
III	RFTL-3 7.5 2.5/3.5	RFTL-7 9 3/4	RFTL-7 6 3/4	RFTL-3 5.0 2.5/3.5	RFTL-3 5.0 2.5/3.5				
IV				RFTL-7 4.5 2/3					
V		RFTL-2 6.0 2/3	RFTL-5A 6 2.5/3.5	RFTL-1 4.5 1.5/2.5	RFTL-5A 4.5 2.5/3.5	RFTL-5A 3.5 2.5/3.5			
VI		RFTL-5B 6.0 3/4	RFTL-1 4.5 1.5/2.5	RFTL-2 4.5 2/3	RFTL-1 3.5 1.5/2.5	RFTL-5A 3.5 2.5/3.5			
VII	RFTL-6 17.5 2.5/3.5	RFTL-6 11.5 2.5/3.5	RFTL-5B 4.5 3/4	RFTL-2 3.5 2/3	RFTL-5A 3.5 2.5/3.5	RFTL-1 3.0 1.5/2.5	RFTL-5A 3.0 2.5/3.5		
VIII	RFTL-6 17.5 2.5/3.5	RFTL-6 11.5 2.5/3.5	RFTL-4 6.5 2/3	RFTL-5B 3.5 3/4	RFTL-5A 3.0 2.5/3.5	RFTL-2 3.0 2/3			
IX	RFTL-6 17.5 2.5/3.5	RFTL-6 11.5 2.5/3.5	RFTL-4 6.5 2/3	RFTL-9 10 2.5/3.5		RFTL-5B 3 3/4	RFTL-2 2.5 2/3	RFTL-5A 2.5 2.5/3.5	
X		RFTL-6 11.5 2/3	RFTL-4 6.5 2/3	RFTL-9 10 2.5/3.5		RFTL-5B 2.5 2.5/3.5	RFTL-8 6.5 2.5/3.5	RFTL-2 2.5 1/2	RFTL-5A 2.5 2/3
XI			RFTL-9 10 2.5/3.5	RFTL-4 5 2/3	RFTL-9 8.5 2/3	RFTL-8 6.5 2.5/3.5			
XII				RFTL-4 5 2/3	RFTL-9 7 2/3	RFTL-8 6.5 2.5/3.5			
XIII					RFTL-4 4.5 2/3	RFTL-8 6.5 2.5/3.5			
XIV					RFTL-8B 5.0 2/3	RFTL-8 6.5 2.5/3.5	RFTL-8B 4.5 2/3		
XV						RFTL-8B 4.5 2/3	RFTL-8 5.5 2/3		
XVI						RFTL-8B 4.5 2/3	RFTL-8 5.5 2/3		
XVII							RFTL-8B 4.0 1/2	RFTL-8 5.0 1.5/2.5	
XVIII									
XIX									

MOVEMENT POINT RATIO TABLE

TRIPLE WARP DRIVES

Movement Point Ratios

Ship Class	1/1	2/1	3/1	4/1	5/1	6/1	7/1	8/1	9/1
I									
II									
III									
IV									
V									
VI									
VII									
VIII									
IX									
X									
XI									
XII									
XIII									
XIV									
XV									
XVI								RFTL-8B 8.5 2.5/3.5	
XVII									RFTL-8B 7.5 2.5/3.5
XVIII									RFTL-8B 7.5 2.0/3.0
XIX									

IMPULSE ENGINE TYPES

Engine Type	Mass (MT)	Power Units Available	Control Computer Type	Appropriate Ship Class	Superstructure	Availability	Cost (MCr)	Year
RNSP-1	350	1	R1L	1-4	0.2			2130
RNSP-1B	350	2	R2L	5-7	0.2			2130
RNSP-2	550	2	R3L	8-11	0.2			2143
RNSP-3A	750	3	R2L	5-8	0.2			2142
RNSP-3B	750	5	R3L	9-11	0.2			2142
RNSP-4	450	2	R1L	3-4	0.2			2155
RNSP-5A	1000	6	R3L	10-13	0.2			2155
RNSP-5B	1000	6	R4L	12-19	0.2			2156

MOVEMENT POINT RATIO TABLE

IMPULSE ENGINES

Movement Point Ratios

Ship Class	1/4	1/3	1/2	1/1	2/1	3/1	4/1	5/1	6/1	7/1	8/1	9/1
I				RNSP-1A 1.5	RNSP-1A 1	RNSP-1A 0.5						
II				RNSP-1A 1.5	RNSP-1A 1	RNSP-1A 0.5	RNSP-1A 0.5					
III				RNSP-1A 1.5	RNSP-1A 1	RNSP-4 1.5	RNSP-1A 0.5	RNSP-4 1	RNSP-1A 0.5	RNSP-4 1		
IV				RNSP-1A 1.5	RNSP-1A 1	RNSP-1A 0.5	RNSP-4 1	RNSP-1A 0.5	RNSP-4 1			
V				RNSP-1B 1.5	RNSP-1B 1	RNSP-4 1.5	RNSP-1B 1	RNSP-3A 1.5	RNSP-1B 1	RNSP-3A 1.5	RNSP-3A 1	RNSP-3A 1
VI					RNSP-3A 2.5	RNSP-1B 1	RNSP-3A 1.5	RNSP-1B 1	RNSP-3A 1.5	RNSP-3A 1	RNSP-3A 1	
VII					RNSP-3A 2.5	RNSP-3A 1.5	RNSP-3A 1.5	RNSP-3A 1	RNSP-3A 1	RNSP-3A 1		
VIII					RNSP-3A 2.5	RNSP-3A 1.5	RNSP-2 1	RNSP-3A 1.5	RNSP-2 1	RNSP-3A 1	RNSP-2 1	RNSP-3A 1
IX					RNSP-3B 4	RNSP-3B 2.5	RNSP-2 1	RNSP-3B 2	RNSP-2 1	RNSP-3B 1.5	RNSP-2 1	RNSP-3B 1
X						RNSP-3B 2.5	RNSP-2 1	RNSP-3B 2	RNSP-2 1	RNSP-3B 1.5	RNSP-2 1	RNSP-3B 1
							RNSP-5A 2.5	RNSP-5A 2	RNSP-5A 1.5	RNSP-5A 1.5	RNSP-5A 1.5	RNSP-5A 1
XI						RNSP-3B 2.5	RNSP-2 1	RNSP-3B 2	RNSP-2 1	RNSP-3B 1.5	RNSP-2 1	RNSP-3B 1
							RNSP-5A 2	RNSP-5A 1.5	RNSP-5A 1.5	RNSP-5A 1.5	RNSP-5A 1.5	RNSP-5A 1
XII								RNSP-5A 2	RNSP-5A 1.5	RNSP-5A 1.5	RNSP-5A 1.5	RNSP-5A 1
										RNSP-5B 1.5	RNSP-5B 1.5	RNSP-5B 1
XIII									RNSP-5A 1.5	RNSP-5A 1.5	RNSP-5A 1.5	RNSP-5A 1
										RNSP-5B 1.5	RNSP-5B 1.5	RNSP-5B 1
XIV										RNSP-5B 1.5	RNSP-5B 1.5	RNSP-5B 1
XV										RNSP-5B 1.5	RNSP-5B 1.5	RNSP-5B 1
XVI										RNSP-5B 1.5	RNSP-5B 1.5	RNSP-5B 1
XVII											RNSP-5B 1.5	RNSP-5B 1
XVIII												RNSP-5B 1
XIX												RNSP-5B 1

SHIELD GENERATORS

Shield Generator Type	Mass (MT)	Control Computer Type	SER	Superstructure	Availability	Cost (MCr)	Year
RDS1	500	R1L	0.5	1			2130
RDS2	1000	R2L	0.5	2			2144
RDS3	2000	R3L	0.5	3			2148
RDS4	4000	R4L	0.5	4			2155
RDS5	10000	R5L	0.5	5			2156

SHIELD POINT RATIO TABLE

Shield Point Ratio

Ship Class	1/2				
	RDS-1	RDS-2	RDS-3	RDS-4	RDS-5
I	2	3	4	5	5
	6	9	12	15	15
II	2	3	4	5	5
	6	9	12	15	15
III	2	3	4	5	5
	6	9	12	15	15
IV	2	3	4	5	5
	6	9	12	15	15
V	1	2	3	4	4
	3	6	9	12	12
VI	1	2	3	4	4
	3	6	9	12	12
VII	-	2	3	4	4
	-	6	9	12	12
VIII	-	2	3	4	4
	-	6	9	12	12
IX	-	1	2	3	4
	-	3	6	9	12
X	-	1	2	3	3
	-	3	6	9	9
XI	-	-	2	3	3
	-	-	6	9	9
XII	-	-	2	3	3
	-	-	6	9	9
XIII	-	-	1	2	3
	-	-	3	6	9
XIV	-	-	1	2	3
	-	-	3	6	9
XV	-	-	2	1	3
	-	-	6	3	9
XVI	-	-	2	1	3
	-	-	6	3	9
XVII	-	-	1	1	2
	-	-	3	3	6

DRILL BEAM WEAPON TYPE

Beam Weapon Type	Mass (Mt)	Damage	+3	+2	+1	Maximum Range	Firing Chart	WDF	Superstructure	Availability	Cost (Mcr)	Year
RDB-1	100	1			1-2	4	A	0.3	0.1			2130
RDB-2	150	1			1-2	6	C	0.4	0.2			2140
RDB-3	200	1			1-2	6	D	0.5	0.2			2150
RDB-4	275	2			1-3	6	D	0.6	0.4			2155
RDB-5	315	2			1-4	8	E	0.8	0.4			2158
RDB-6	350	2			1-6	10	B	1	0.4			2175
RDB-7	450	2			1-6	8	F	1.1	0.5			2200

STARBOMB WEAPON TYPE

Missile Type	Mass (Mt)	Power to Arm	Damage Chart	Range	Firing Chart	WDF	Superstructure	Availability	Cost (Mcr)	Year
RM-SB1	5000	5	12	4	A	3	1.4			2144
RM-SB2	7500	5	8	6	C	4	1.4			2155
RM-SB3	15000	10	24	4	A	5	2.9			2158
RM-SB4	2500	3	6	4	A	1	0.7			2158
RM-SB5	6000	7	12	6	C	3	2.1			2175
RM-SB6	4000	6	12	6	D	2	2.5			2200
RM-SB7	2000	5	10	6	D	2	2.1			2220

ROMULAN STARBOMBS ARE SINGLE USE MISSILE WEAPONS. SHIPS MAY BE FITTED WITH MORE THAN ONE STARBOMB, BUT ONLY ONE CAN BE LAUNCHED PER TURN. STARBOMBS HAVE A CHANCE OF EXPLODING PREMATURELY, ROLL D10, ON A 8 IT EXPLODES AFTER LAUNCH, 50% OF DAMAGE IS APPLIED TO THE LAUNCHING SHIP. ON A 9 IT EXPLODES MID FLIGHT, 25% OF DAMAGE TO BOTH LAUNCHING AND TARGET SHIPS, ON A 10 IT EXPLODES PREMATURELY 50% OF DAMAGE TO TARGET SHIP.

CLUSTER MISSILE WEAPON TYPE

Missile Type	Mass (Mt)	Power to Arm	Damage Chart	Range	Firing Chart	WDF	Superstructure	Availability	Cost (Mcr)	Year
RM-C1	1200	4	RC-2	4	A	1	0.9			2130
RM-C2	1800	4	RC-4	4	A	1.5	1.1			2140
RM-C3	1850	4	RC-5	6	C	1.8	1.3			2150
RM-C4	2200	4	RC-1	6	C	2	1.6			2158
RM-C5	2350	5	RC-5	6	D	2.3	1.6			2175
RM-C6	2100	5	RC-1	6	D	2.6	1.9			2200
RM-C7	2500	5	RC-3	8	E	2.2	1.9			2220

CLUSTER MISSILES ARE IN EFFECT A SHOTGUN LIKE SALVO OF SMALL MISSILES. AS WITH PLASMA WEAPONS THEY CAN BE EVADED, AND A GLANCING HIT WILL RESULT. UNLIKE OTHER MISSILE SYSTEMS, THE CLOSER THE SHIP IS TO LAUNCHER THE MORE DAMAGE WILL OCCUR, THIS IS DUE TO THE TENDENCY OF THE MISSILES TO SPREAD OUT OVER DISTANCE. EACH CLUSTER MISSILE SYSTEM CAN CARRY FIVE SALVOES, AND ONLY TWO SYSTEM MAY BE FITTED TO A SHIP IN CLASSES 1-12, AND FOUR IN CLASSES 13-20.

PLASMA WEAPON TYPE

Missile Type	Mass (Mt)	Power to Arm	Damage Chart	Range	Firing Chart	WDF	Superstructure	Availability	Cost (MCr)	Year
RPC-1	5000	6	RC-1	6	C	5	1.6			2140
RPC-2	5500	6	RC-1	6	D	6	1.9			2150
RPC-3	2150	4	RC-2	4	A	3	0.9			2158
RPC-4	3500	8	RC-3	8	E	3	1.9			2165
RPC-5	2500	8	RC-3	8	E	3	1.9			2177
RPC-6	1000	8	RC-3	8	E	2.5	1.9			2191

PLASMA & CLUSTER MISSILE WEAPON DAMAGE

Range	Damage Chart					WDF	Superstructure	Availability	Cost (MCr)	Year
	RC-1	RC-2	RC-3	RC-4	RC-5					
1	12/6	10/5	12/6	12/6	10/5	-	-	-	-	-
2	10/5	8/4	10/5	8/4	8/4	-	-	-	-	-
3	8/4	6/3	10/5	4/2	6/3	-	-	-	-	-
4	6/3	4/2	8/4	2/1	6/3	-	-	-	-	-
5	4/2	-	8/4	-	4/2	-	-	-	-	-
6	2/1	-	6/3	-	2/1	-	-	-	-	-
7	-	-	4/2	-	-	-	-	-	-	-
8	-	-	2/1	-	-	-	-	-	-	-
9	-	-	-	-	-	-	-	-	-	-
10	-	-	-	-	-	-	-	-	-	-