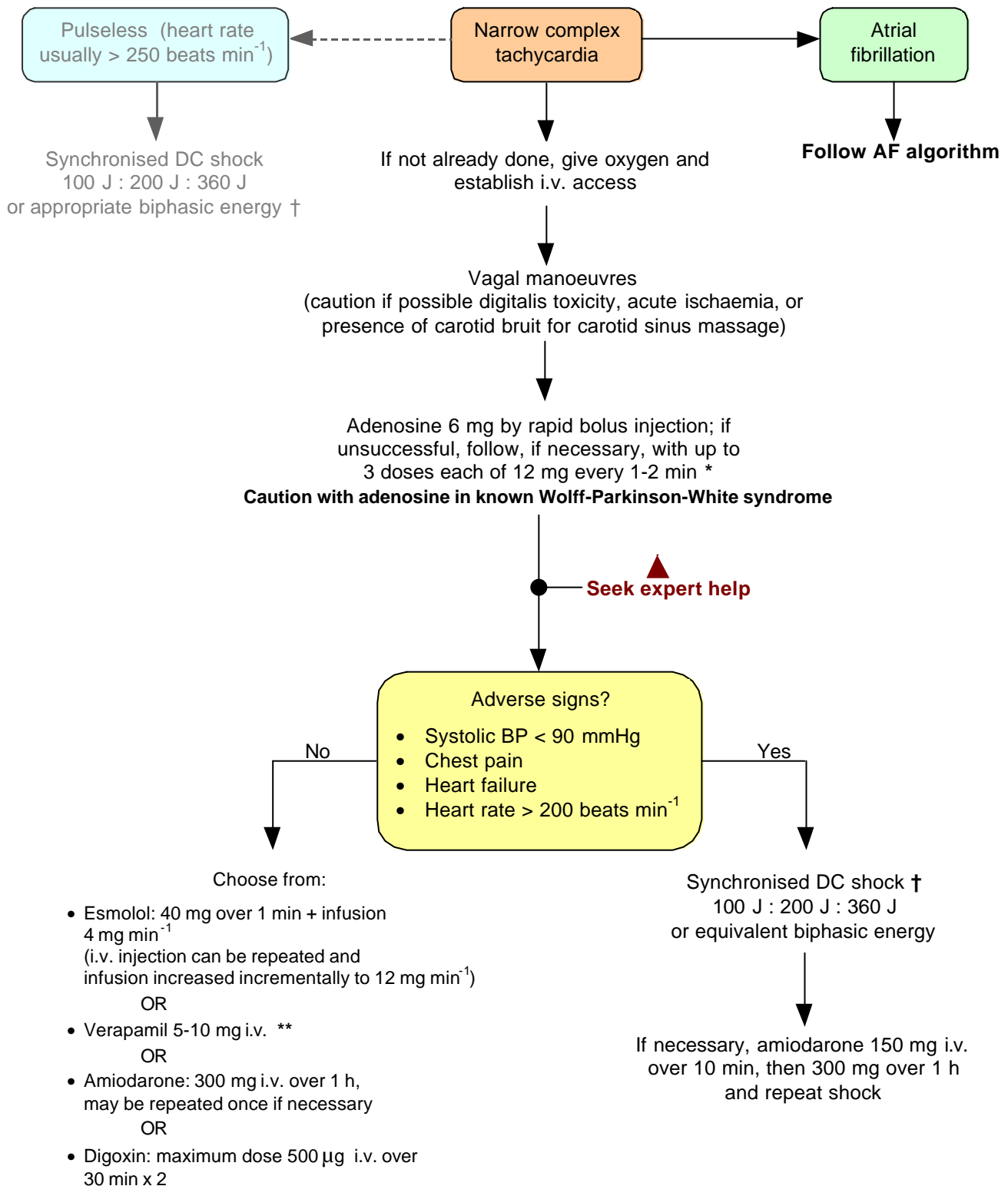


Narrow Complex Tachycardia

(Presumed supraventricular tachycardia)



Doses throughout are based on an adult of average body weight
A starting dose of 6 mg adenosine is currently outside the UK licence for this agent.

* Note 1: Theophylline and related compounds block the effect of adenosine. Patients on dipyridamole, carbamazepine, or with denervated hearts have a markedly exaggerated effect which may be hazardous.

† Note 2: DC shock is always given under sedation/ general anaesthesia.

** Note 3: Not to be used in patients receiving beta-blockers.

Figure 12.4 Narrow complex tachycardia algorithm