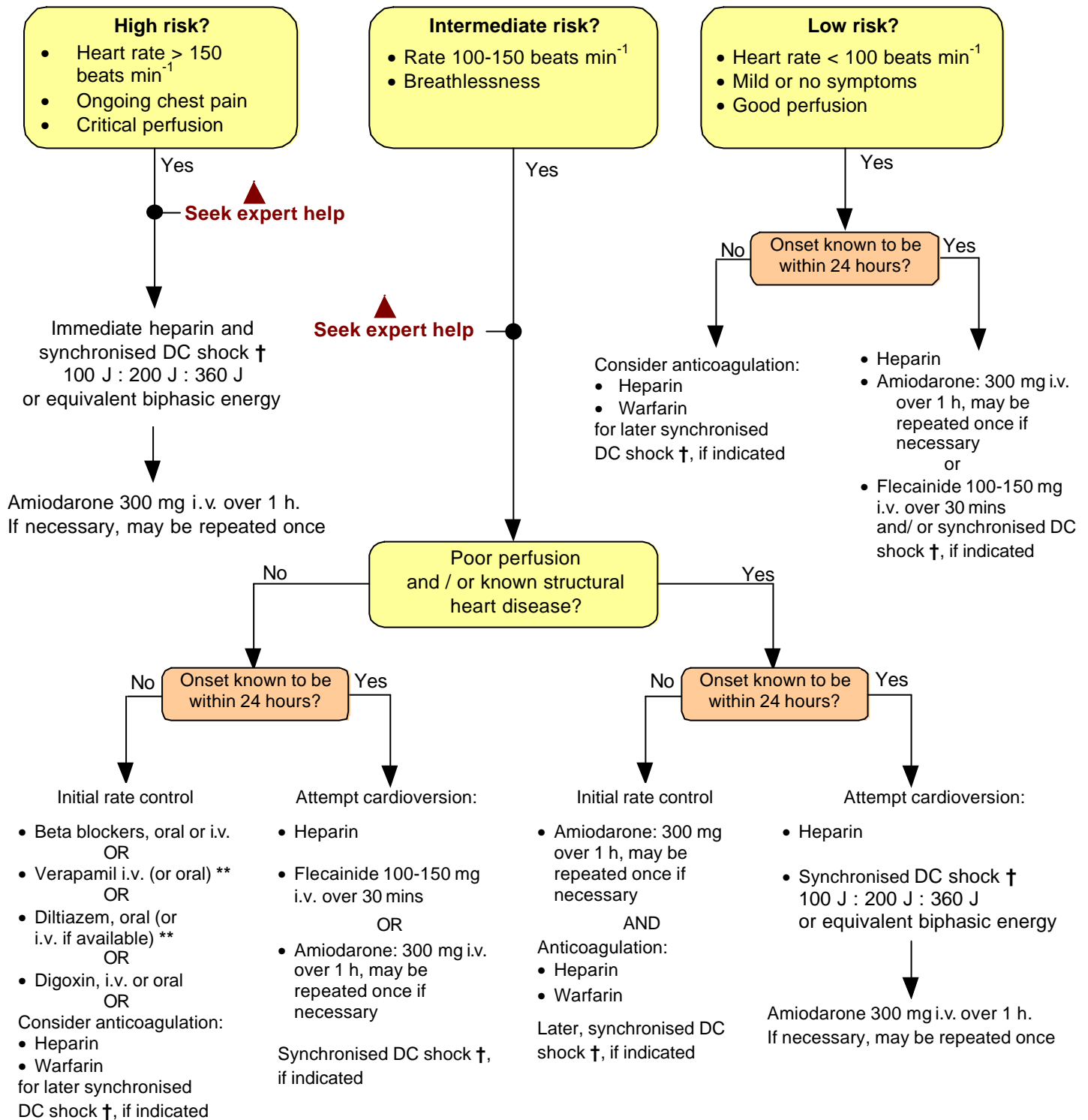


# Atrial fibrillation

If appropriate, give oxygen and establish i.v. access



Doses throughout are based on an adult of average body weight

† Note 1: DC shock is always given under sedation/ general anaesthesia.

\*\* Note 2: NOT TO BE USED IN PATIENTS RECEIVING BETA-BLOCKERS

**Figure 12.3 Atrial fibrillation algorithm (updated July 2001)**