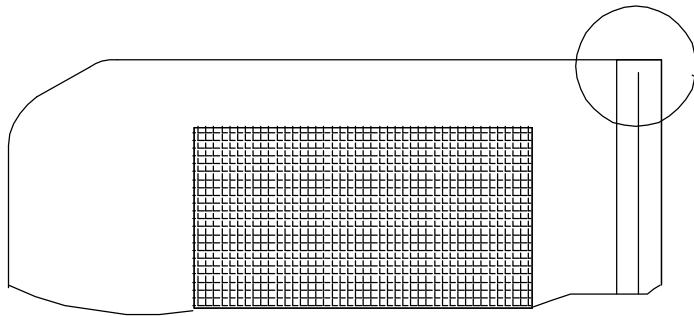


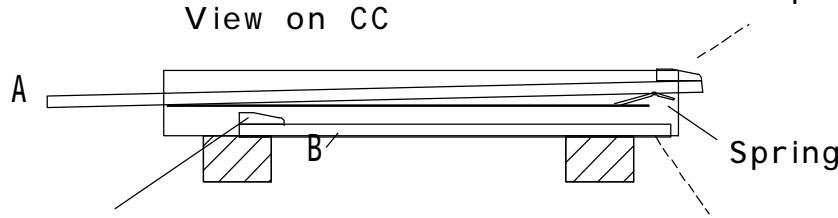


(A) OMF 5 Ply 10mm thick

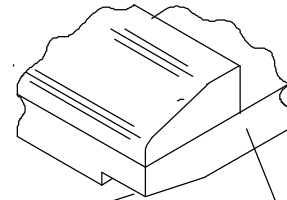
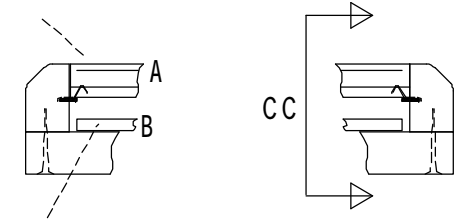


Note, detail applied with file or belt sander, this permits the OMF to be inserted from the front if required.

Door frame architrave used here



OMF shown with springs partially compressed, as if a brood box is on top.

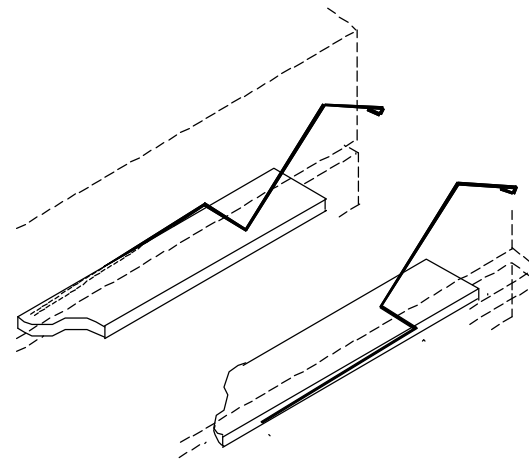


Vaseline this edge

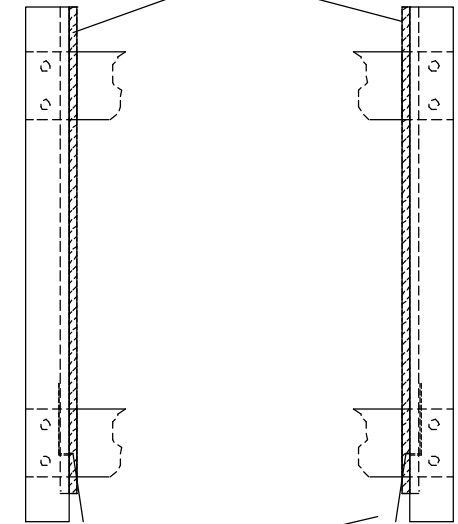
Spring Details

for a few pence.
Spring steel 1-1.5mm diameter
obtained from local spring manufacturer

Form with vice and hammer and
harden in domestic oven for 20 minutes at
full heat. No need to quench.



Aluminium runners
glued into circular
saw cut groove



Special springs
held behind runners

KISOMF Hive Floor

By Graham Law

Email: graham@beeginners.info