



# What's on

## What's on in October 2009. Your guide to our regular and special events.

### Regular events at THE ROOMS – 39 Ironstone Road

Monday	7.30 – 9.00pm	Fit 'n' Trim Club (contact Mrs Spooner - 685859)
Tuesday	7.00 – 9.00pm	Dance Group (Private Dance Class)
Wednesday	11.00 – 4.00pm	Darby and Joan Club (contact Mrs Wincup –682398)
	5.30 – 8.15pm	Parish Office Hour (contact Marie Hiley – 304611)
	7.00 – 8.30pm	Weightwatchers (contact Gina Parker –01922 630817)
Thursday	5.30 – 6.45pm	Rainbows – for girls 5-7yrs (contact Rachel – 07852 265830)
Friday	Noon – 4.00pm	Redwood Friendship Club (contact Mrs Bedward – 305983)
	7.30 – 10.00pm	K9 Hooligans (Private Dog Training Group)

### Regular events at St John's Community Church

Daily in Term time and - in holidays	07.30 - 9.00am & 3.30 - 6.00pm or 07.30 - 6.00pm	<b>Oscar's</b> , Out of School Care Club in term time & full day care during the school holidays. (contact Sue Southall – 670078)
Monday	09.30 – 10.15am	Staff Prayer meeting
	11.30 - 1.30pm	WRVS Luncheon Club (contact Wendy 01827 709609)
	8.00pm	<b>REAL</b> Group (church home group) (term-time only)
	7.30pm	Ministry Team meeting. 1st and 3rd Monday of month
Tuesday	7.30pm	<b>REAL</b> Group (church home group)
Wednesday	10.00 -10.45am	Holy Communion
	11.00 -12.00pm	Extended Communion at Chase View nursing home on 1st Wednesday of the month. On 2nd and 4th Wednesdays of the month communion in Richardson Court and other private homes.
	8.00pm	<b>REAL</b> Groups(church home group) meet in homes
	7.30 - 9.30pm	<b>Youth</b> meet at Church (14 -17yrs) – term time only
Thursday	09.15 - 11.15am	<b>Little Friends</b> carer + toddler group (term-time) contact 304611
	8.00 pm	<b>REAL</b> Groups(church home group) meeting
Friday	4.30pm onwards	<b>YPC</b> clubs (term-time) children's clubs for 5 -13's 4.30 pm – 5.30 pm: school years 1 and 2. 6.00pm – 7.30pm: school years 3 to 8 (contact Parish Office 304611)
Saturday	07.30 - 8.30am	Listening Prayer meeting

## Sunday



at 9:00 a.m Meet with God, and worship using “traditional” prayers.



at 10:30 a.m. An informal, lively style of worship with activities and groups for children.



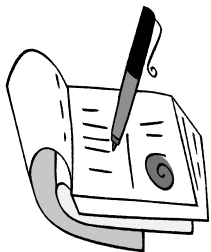
at 6.30 p.m. “Chill out” on the first three Sundays of each month. Contemporary, relaxed worship, with music and prayer.



All Age Worship is where everyone, young and old, learn together. There is time to meet and make friends, time to join in activities, time to sing and time to listen. Every 2nd Sunday in the month 10.30-11:45pm

Thursday 1 <sup>st</sup>	09.15 – 11.15am 6.00pm	Little Friends – Harvest Oscar’s management committee meeting
Friday 2 <sup>nd</sup>	10.00 – Noon 4.30 – 7.30pm	Pathway – Life skills YPC Groups – for youngsters up to 14yrs
Saturday 3 <sup>rd</sup>	09.00 – 4.00pm	Cruse Bereavement
Sunday 4 <sup>th</sup>	10.30 am	<b>Chase Terrace Harvest Praise</b>
Monday 5 <sup>th</sup>	6.00 – 8.00pm 7.30pm	Pathway Ministry Team
Tuesday 6 <sup>th</sup>	6.30 - 9.30pm 7.00 – 8.00pm	Keeper’s of the Archives Boney Hay & Chase Terrace W.I. committee meeting
Wednesday 7 <sup>th</sup>	4.00 - 9.00pm	Lichfield CVS AGM
Friday 9 <sup>th</sup>	10.00 – Noon 4.30 – 7.30pm	Pathway – Lifeskills YPC Groups
Saturday 10 <sup>th</sup>	10.30 – 9.00pm 7.00pm	<b>Renewal Day at Lichfield Cathedral</b> First Steps Supper
Sunday 11 <sup>th</sup>	6.30pm	Intimacy with God – including a time of intercessory prayers
Monday 12 <sup>th</sup>	6.00 – 8.00pm	Pathway
Tuesday 13 <sup>th</sup>	7.30 – 9.30pm	Boney Hay & Chase Terrace W.I.
Wednesday 14 <sup>th</sup>	10.15am 7.30pm	Selwyn Lectures at Lichfield Cathedral <b>Bring &amp; Share meal for Steve’s 60<sup>th</sup> Birthday</b>
Thursday 15 <sup>th</sup>	6.30 – 9.30pm 7.00pm	Early Years – Messy Play First Steps ‘A’
Friday 16 <sup>th</sup>	10.00 – Noon 4.30pm	Pathway – Life skills YPC – groups for youngsters up to 14yrs
Saturday 17 <sup>th</sup>	09.00- 4.00pm 09.00am	Cruse Bereavement Real Group Leaders Breakfast
Monday 19 <sup>th</sup>	7.30 – 9.30pm	Ministry Team
Tuesday 20 <sup>th</sup>	10.00 - Noon	Pathway
Thursday 22 <sup>nd</sup>	7.00pm	First Steps ‘B’
Friday 23 <sup>rd</sup>	10.00 – Noon	Pathway – Life skills
Saturday 24 <sup>th</sup>	09.00 – 4.00pm 3.00-5.00pm	Cruse Bereavement Ladies Group ‘Coffee & Chat’
Monday 26 <sup>th</sup>	07.30-6.00pm	Oscar’s open all day
Tuesday 27 <sup>th</sup>	07.30-6.00pm	Oscar’s open all day
Wednesday 28 <sup>th</sup>	07.30-6.00pm	Oscar’s open all day
Thursday 29 <sup>th</sup>	07.30-6.00pm 6.30pm	Oscar’s open all day Standing Committee
Friday 30 <sup>th</sup>	07.30-6.00pm	Oscar’s open all day
Saturday 31 <sup>st</sup>	09.00 – 4.00pm	Cruse Bereavement

### Dates for your diary



Monday 9 <sup>th</sup> November	6.30pm	<b>P.C.C</b>
Monday 16 <sup>th</sup> November	08.45am	Deanery Chapter with breakfast
Saturday 28 <sup>th</sup> November	Noon - 3.00pm	<b>Christmas Fayre</b>
Thursday 3 <sup>rd</sup> December	7.00pm	Time Together decorating church
Saturday 5 <sup>th</sup> December	7.00 - 9.00pm	425 Squadron Concert
Saturday 12 <sup>th</sup> December	1.00 – 3.00pm	Community Care Christmas Lunch

If you want to book any of our rooms or premises, please phone 304611 or e-mail [bookings@godspace.org.uk](mailto:bookings@godspace.org.uk)

For more information about the ministry of St John’s Community Church, Chase Terrace please contact the parish office at 39 Ironstone Road, on 01543 304611 between 10.30-12.30 Monday, 9.00-12noon