



Modular Quay

1:250 Scale Card Model

Designed by David Hathaway
6 x A4 sheets, ~30 parts
Skill rating - Intermediate

General

This model quay is representative of a typical brick or stone wharf/quay in use in small or medium-sized harbours around Europe. The model is quickly built and can be used in harbour dioramas or other maritime scenes.

It can be used in either wide or narrow format and either as a single unit or as several units glued together to form a larger wharf assembly. Corner units are also provided for added flexibility and the quay walls can be assembled with or without wooden piles. 4 different facings are provided - stone, concrete, brick and steel pilings.

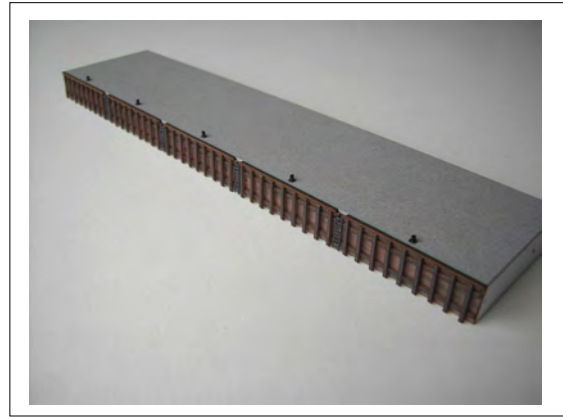
Instructions

Print out the instructions onto plain paper and the required number of selected parts sheet onto light card (160-170gsm card is ideal).

Where laminated parts are required glue the card to 1mm thick cardboard (greyboard or strawboard) before cutting out the parts

Cut out parts using a sharp craft knife or scalpel - be careful when using sharp knives!

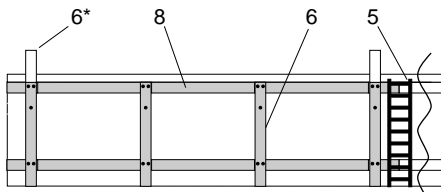
Use PVA or solvent-based glue for best results.



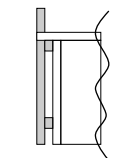
Key to Symbols

- - Fold away from printed side.
- - Fold towards printed side.
- 12 - Part number
- 12* - Optional part
- 12** - Alternative part
- 7 - Glue numbered part here.
- || - Cut to end of marked line.
- x - Cut out marked area
- ⤵ - Roll part by bending this side

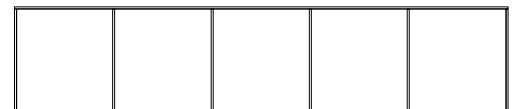
Assembly diagrams - wharf sections



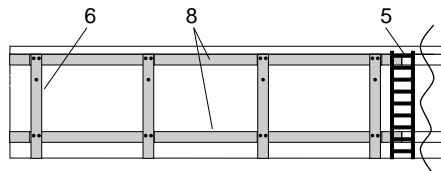
Piles spacing - 1



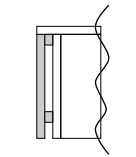
Cross-section



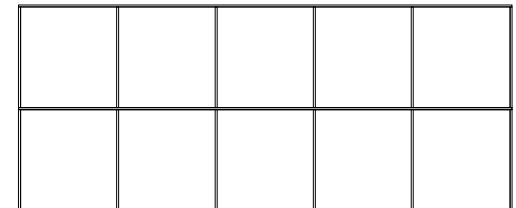
Underside of single-width unit



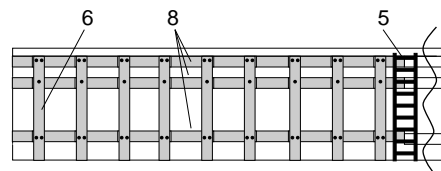
Piles spacing - 2



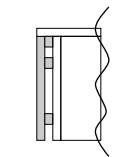
Cross-section



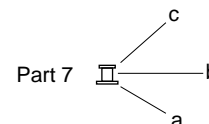
Underside of double-width unit



Piles spacing - 3



Cross-section



Part 7

