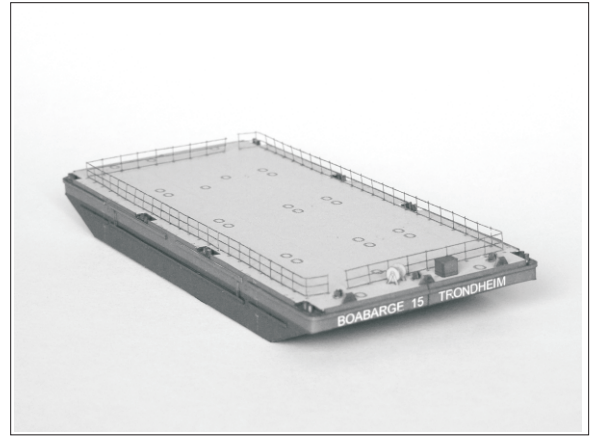




Boa Barge 15

1:250 Scale Card Model

Designed by David Hathaway
1 x A4 sheet, 30 parts
Skill rating - Intermediate



Background

BOA Offshore AS, part of the Norwegian BOA group, operate a fleet of heavy deck cargo barges. These barges vary in size from a few metres long to over 150 metres long. They are chartered for carrying large items of equipment or bulky cargo and may be deployed anywhere around the globe.

Boa Barge 15 is one of the smaller barges in the fleet - it is 34 metres long and can carry loads up to 200 tons. The hull is flat decked and divided internally into x watertight compartments - one or more of the compartments can be flooded to provide extra stability. The barge is equipped with Smit brackets for towing, as well as an emergency towing bridle.

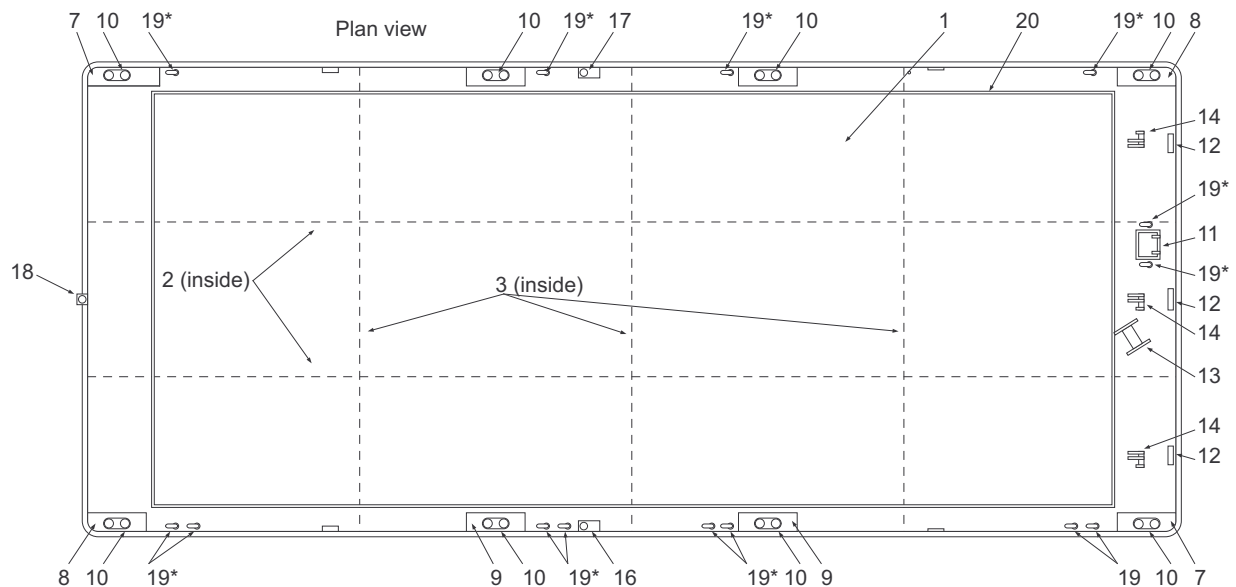
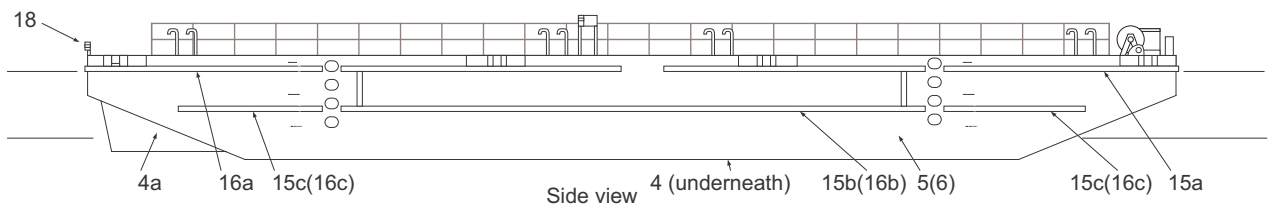
Instructions

Study the assembly diagrams before starting, score all fold lines before cutting out the parts and assemble the model in numerical order. Use PVA adhesive or a household glue. Touching up the cut edges with paint or coloured pencils will improve the appearance of the finished model.

Key to Symbols

- - Fold away from printed side.
- - Fold towards printed side.
- 12 - Part number
- 12* - Optional part
- 12' - Alternative part
- 7 - Glue numbered part here.
- |— - Cut to end of marked line.
- X - Cut out marked area
- Ⓢ - Roll part by bending this side

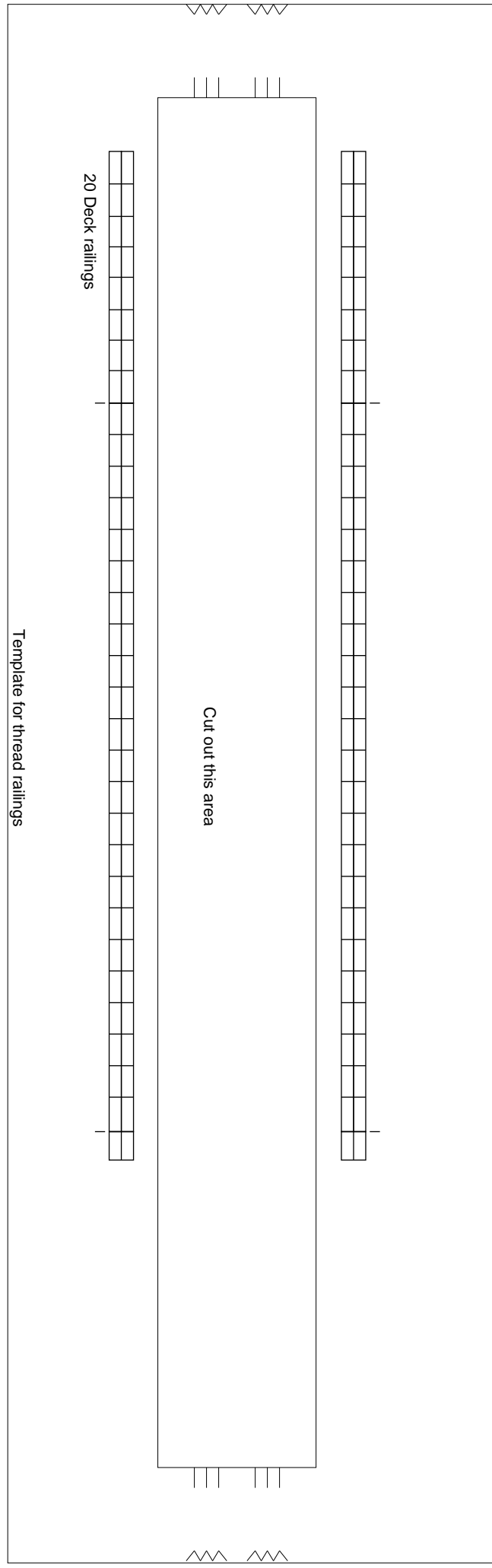
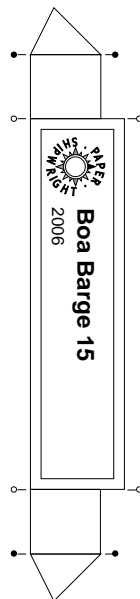
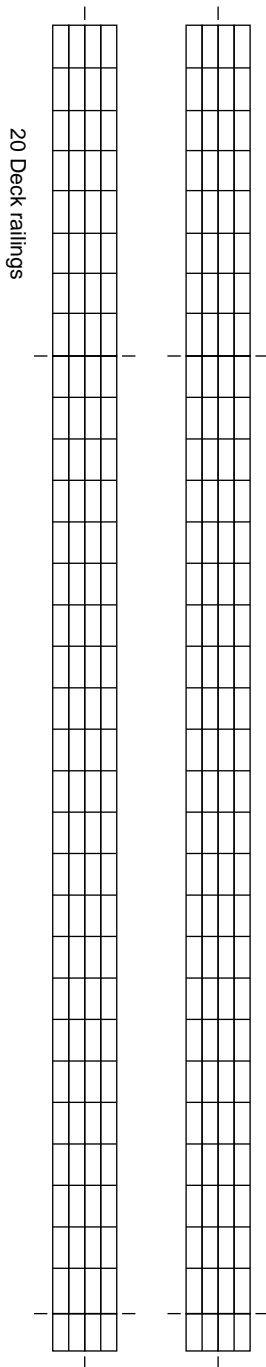
Assembly diagrams

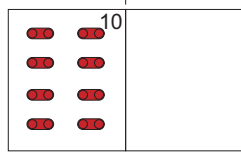
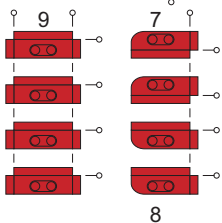
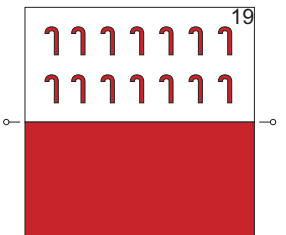
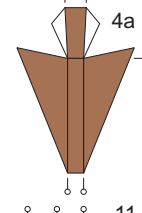
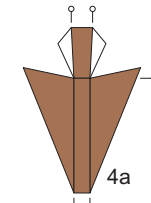
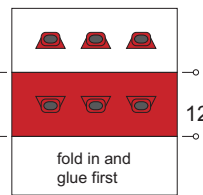
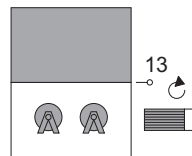
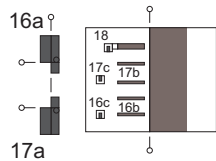
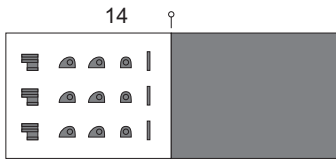
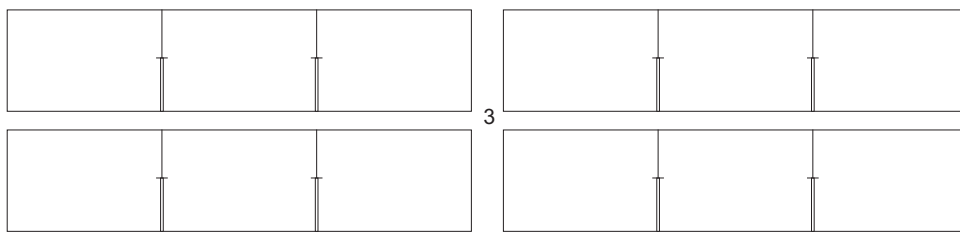
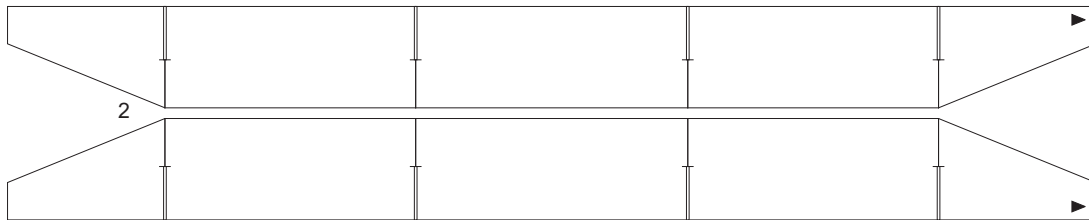
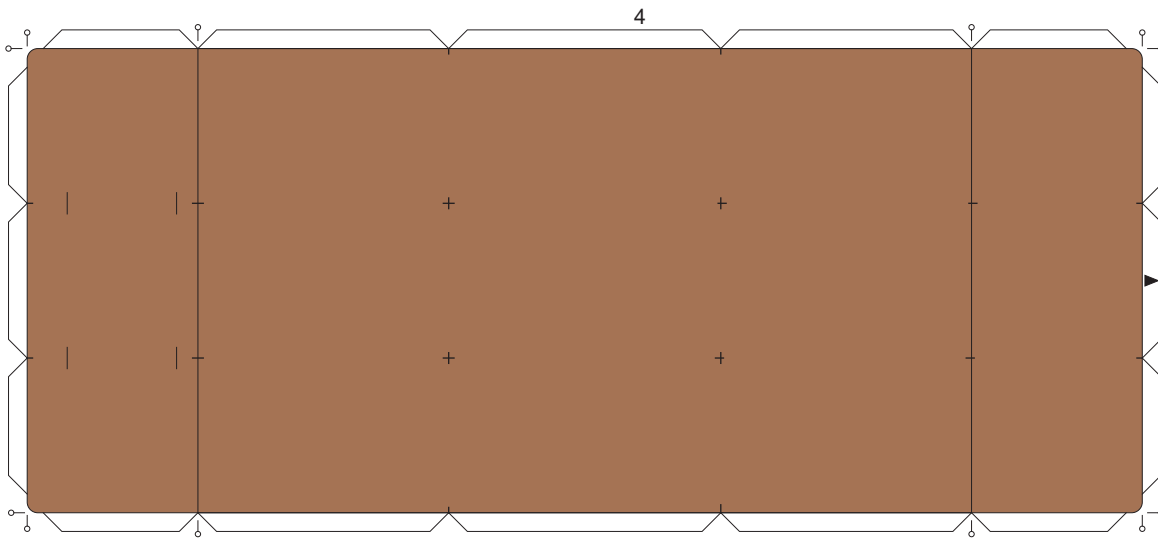
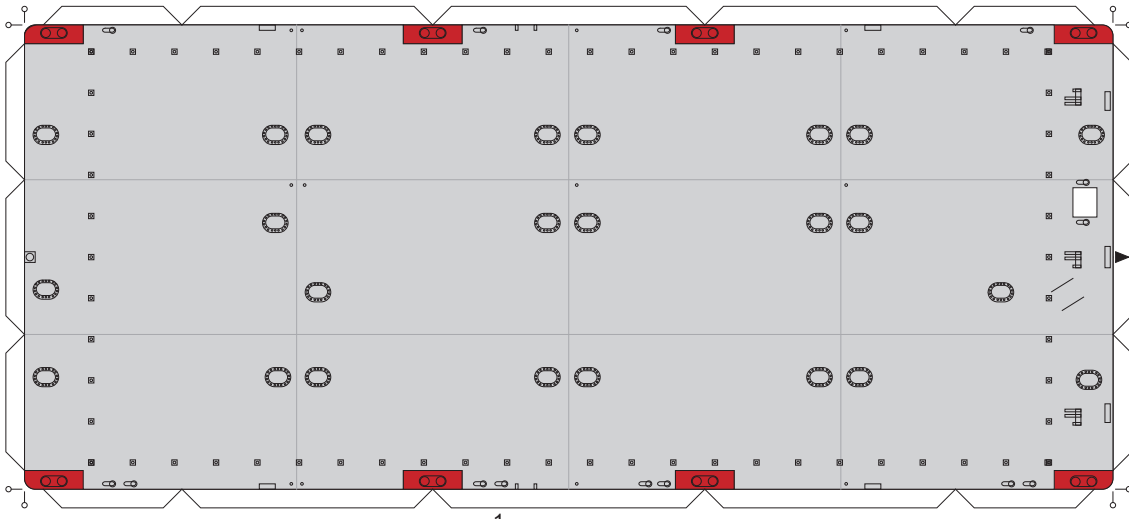


Instructions for making thread railings

Realistic scale railings can significantly improve the appearance of the model and can easily be made using the supplied template. The basic method is to wrap thread around an across the template to form a grid of threads with the correct spacing, then coat with glue.

1. Cut out the template and glue to thick cardboard - remember to cut out the centre opening.
2. Grey or black cotton may be used. Tie the end of the thread to the template and then carefully wrap it around the template, long side first following the guide marks on the template. Keep the thread tight but not too tight or the template will bend. Tie off the thread.
3. Repeat, wrapping the thread around the template's short side and following the guide marks. Tie off the thread when complete.
4. Check that all the threads are aligned with the template.
5. Using slightly diluted PVA adhesive (white craft glue) or instant glue (cyano acrylate glue) coat the threads in the opening of the template, paying particular attention to where they cross. Johnsons Kleer (Also called Future) floor polish can also be used. More than one coat of glue may be needed to give a sufficiently rigid set of railings. Set aside to dry overnight.
6. Carefully cut out the sections of railing using the template as a guide.
7. Fix to the model using white glue or instant glue.





template for bollard

