

## Thermographic Survey at

## Beer Breweries Ltd

16/12/1998

**Customer Contact: Mr John Smith**

**Site: Burton on Trent**

**Your Ref. 1234**

**Report No. B1234**

**Address:**

**East Midlands Thermal Imaging Ltd  
Predictive Maintenance Surveys  
13 Smithfield Avenue  
TROWELL  
Nottingham  
NG9 3PD**

**Telephone:**

**0115 9443333**

**Fax:**

**0115 8779022**

---

**Operator: David Farmer**

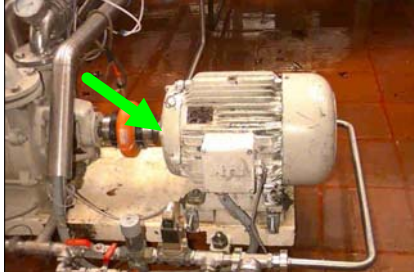
# EMTI Ltd

## Table of Contents

<b>Location</b>	<b>Equipment</b>	<b>Page</b>
Pump House	Motor No. 5	3
Machine Shop	No. 3 Panel	4
Production	Main Gearbox	5
Boiler House	Main Panel	6

<b>EMTI Ltd</b>	<i>Inspected Equipment:</i>	<i>Engineer:</i>
	<b>Motor No. 5</b>	David Farmer

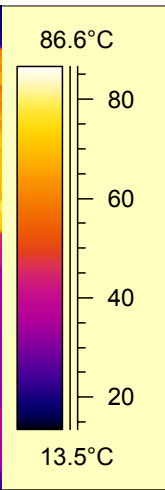
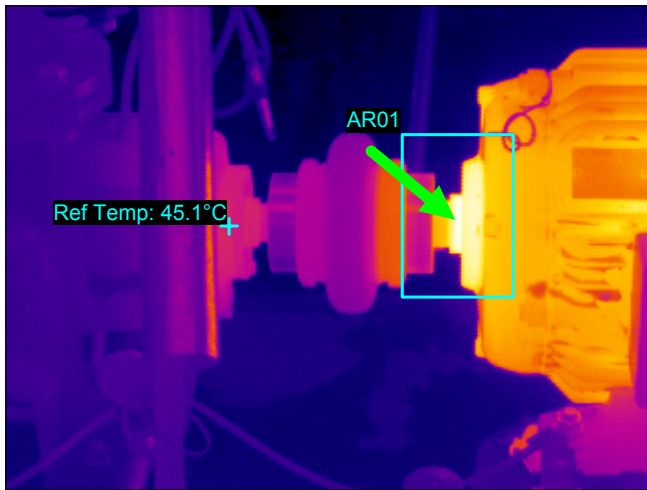
**Identification**



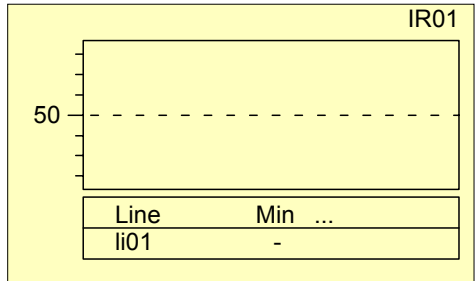
Location	Pump House
Equipment	Motor No. 5
Component	Bearing M/S
Date	10/12/1996
File Name	Trial1b.img

**Fault Description**

<i>Fault</i>	<i>Hot Bearing</i>
--------------	--------------------



Max Temp in Area	86.8°C
Ref Temp	45.1°C
Mean Temp. Rise	41.7°C



**Recommendation**

Inspect ASAP

---



---



---

**Fault Correction**

Date Carried Out: \_\_\_\_\_ By Engineer: \_\_\_\_\_

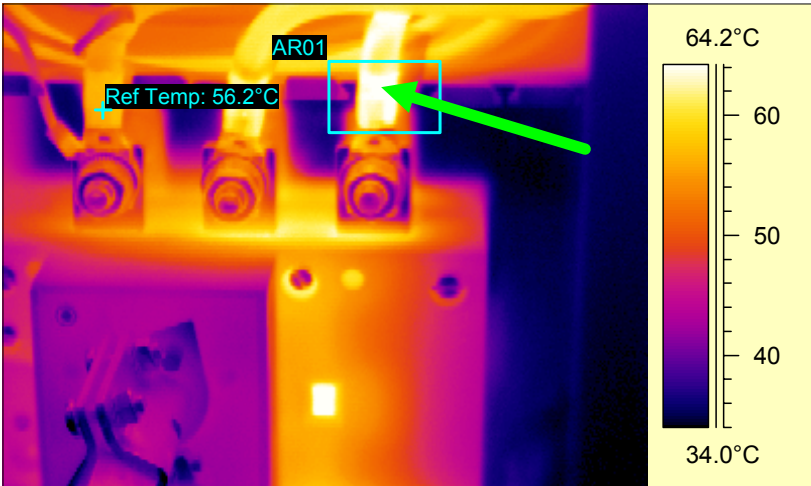
<b>EMTI Ltd</b>	<i>Inspected Equipment:</i>	<i>Engineer:</i>
	<b>No. 3 Panel</b>	David Farmer

**Identification**

Location	Machine Shop
Equipment	No. 3 Panel
Component	Blue Phase
Date	20/01/1998
File Name	I0120-55.img

**Fault Description**

<i>Fault</i>	<i>Hot Termination</i>
--------------	------------------------



Max Temp in Area	65.5°C
Ref Temp	56.2°C
Mean Temp.Rise	9.4°C

IR01

Line	Min	...
li01	-	

**Recommendation**

**Change Next Shutdown**

---



---



---

**Fault Correction**

Date Carried Out: \_\_\_\_\_ By Engineer: \_\_\_\_\_

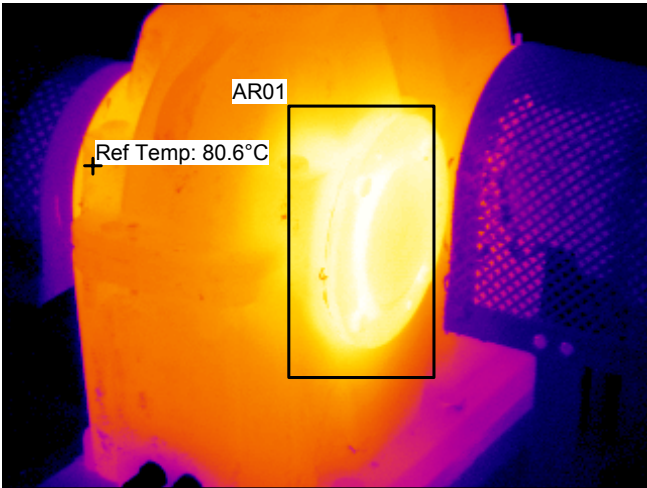
<b>EMTI Ltd</b>	<i>Inspected Equipment:</i>	<i>Engineer:</i>
	<b>Main Gearbox</b>	David Farmer

**Identification**

Location	Production
Equipment	Main Gearbox
Component	Bearing
Date	29/05/1998
File Name	I0529-28.img

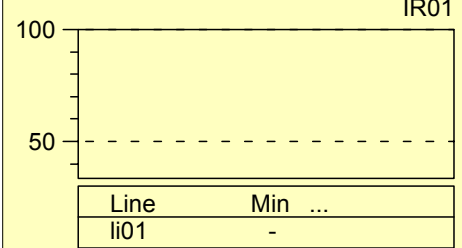
**Fault Description**

<i>Fault</i>	<b>Very Hot</b>
--------------	-----------------



Max Temp in Area	101.2°C
Ref Temp	80.6°C
Mean Temp. Rise	20.6°C

IR01



Line	Min	...
li01	-	

**Recommendation**

**Inspect Urgently**

---



---



---

**Fault Correction**

Date Carried Out: \_\_\_\_\_ By Engineer: \_\_\_\_\_

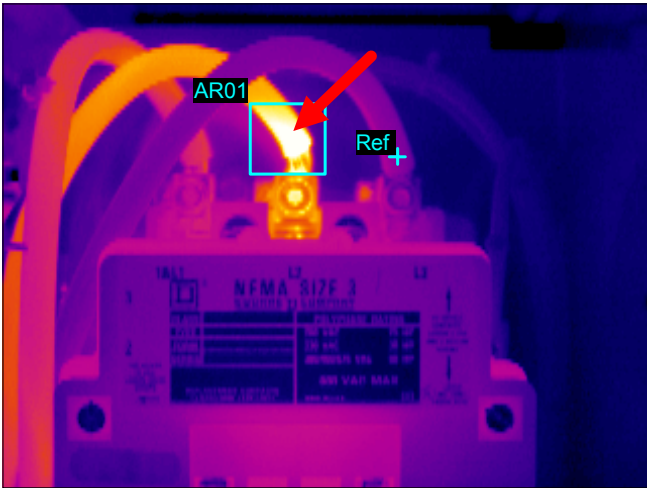
<b>EMTI Ltd</b>	<i>Inspected Equipment:</i>	<i>Engineer:</i>
	<b>Main Panel</b>	David Farmer

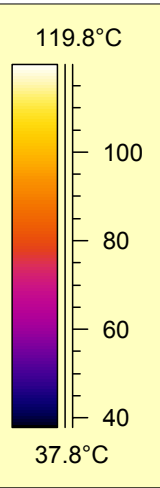
**Identification**

Location	Boiler House
Equipment	Main Panel
Component	Red Phase
Date	25/09/1997
File Name	H0924-27.img

**Fault Description**

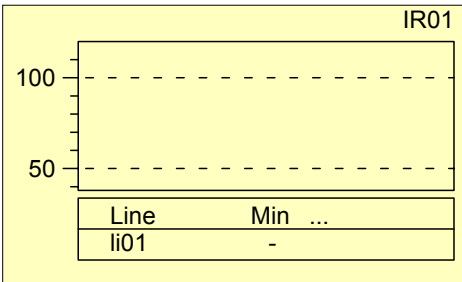
<b>Fault</b>	<b>Very Hot Connection</b>
--------------	----------------------------





Max Temp in Area	127.5°C
Ref Temp	58.2°C
Mean Temp. Rise	69.2°C

IR01



Line	Min	...
li01	-	

**Recommendation**

**Change Urgently**

---



---



---

**Fault Correction**

Date Carried Out: \_\_\_\_\_ By Engineer: \_\_\_\_\_

# EMTI Ltd

## Summary of Inspection at Beer Breweries Ltd

### List of Inspected Items

Location	Equipment	Fault	Recommendation
Pump House	Motor No. 5	Hot Bearing	Inspect ASAP
Machine Shop	No. 3 Panel	Hot Termination	Change Next Shutdown
Production	Main Gearbox	Very Hot	Inspect Urgently
Boiler House	Main Panel	Very Hot Connection	Change Urgently